

Human Claudin 18.2 Protein-Nanodisc

Cat. No. CLD-HM10N

Description

Source	Recombinant Human Claudin 18.2 Protein-Nanodisc is expressed from HEK293 with His tag at the N-terminus (FITC-equivalent protein is fused on cytoplasmic part). It contains Met1-Val261.
Accession	P56856-2
Molecular Weight	The protein has a predicted MW of 49.10 kDa.
Endotoxin	Less than 1 EU per µg by the LAL method.

Formulation and Storage

Formulation	Supplied as 0.22 µm filtered solution in PBS (pH 7.4). Notice: Not recommended for flow cytometry in mammalian cells.
Storage	Valid for 6 months from date of receipt when stored at -80°C. Recommend to aliquot the protein into smaller quantities for optimal storage. Please minimize freeze-thaw cycles.

Background

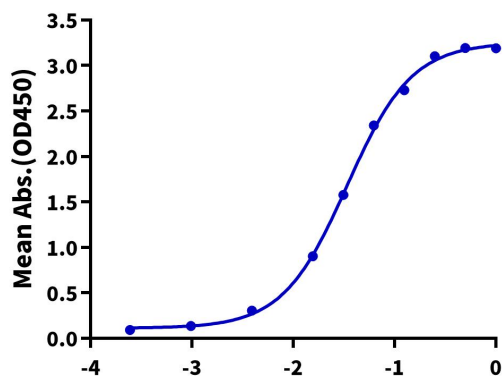
Claudin18 (CLDN18) belongs to the large claudin family of proteins, which form tight junction strands in epithelial cells. CLDN18 is specifically expressed in the stomach and lung. CLDN18 has two alternatively spliced variants, CLDN18.1 and CLDN18.2. Isoform 2 (Claudin 18.2) is abundant in gastric tumors.

Assay Data

ELISA Data

Human Claudin 18.2 Nanodisc, His Tag ELISA

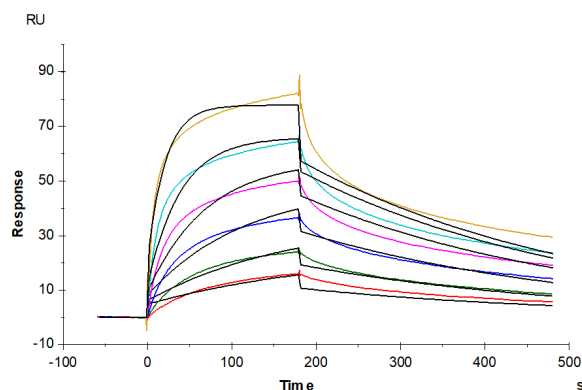
0.5µg Anti-Claudin 18.2 Antibody, hFc Tag Per Well



Immobilized Anti-Claudin 18.2 Antibody, hFc Tag at 5µg/ml(100µl/well) on the plate. Dose response curve for Human Claudin 18.2 Nanodisc, His Tag with the EC50 of 34.1ng/ml determined by ELISA.

Log Human Claudin 18.2 Nanodisc, His Tag Conc.(µg/ml)

SPR Data



Human Claudin 18.2 Nanodisc, His Tag captured on CM5 Chip via Anti-His Antibody can bind Anti-Claudin18.2 Antibody with an affinity constant of 6.63 nM as determined in SPR assay (Biacore T200) (QC Test).